



Loose Concrete, 2010

Solo Show

Galerie naechst St Stephan
Rosemarie Schwarzwaelder
Vienna

www.schwarzwaelder.at

<http://derstandard.at/1277337140844/Spuren-der-Aggression>



Untitled (Barrier), 2010
Clay
358 x 641 x ~10 cm



Loose Concrete, 2010
Room 1





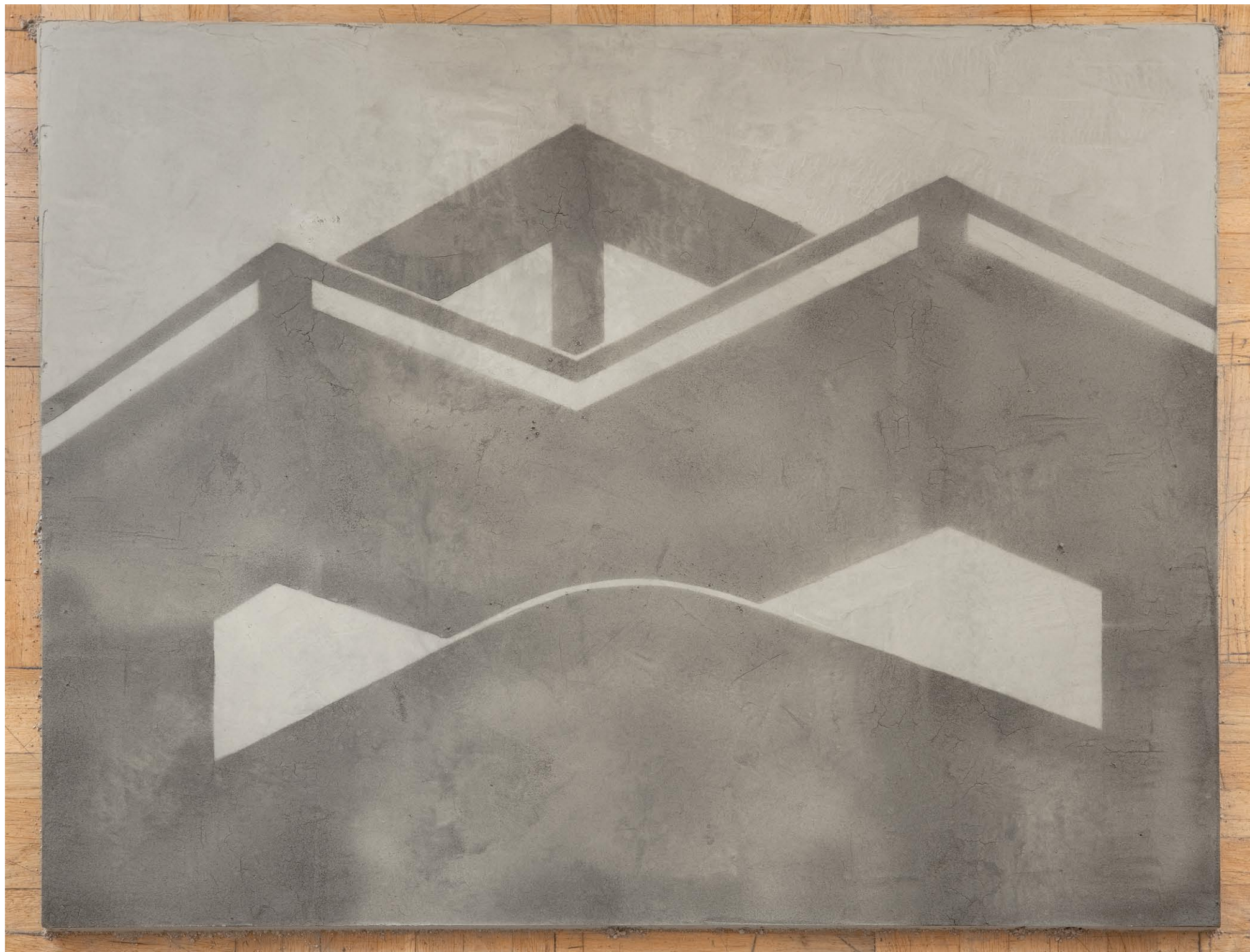


Untitled (Gegenstueck), 2010
Concrete
65 x 25 x ~60 cm



Untitled (Gegenstueck), 2010
Concrete
12 x 240 x ~30 cm







Loose Concrete, 2010
Room 2

Untitled (Zementsprayung), 2010
Sand, Cement, Water
2 x 95 x 80 cm





Loose Concrete, 2010
Room 2



each:
Untitled (Betonkratzung), 2010
Concrete
32 x 42,5 x 4 cm

Untitled (Zementsprayung), 2010
Sand, Cement, Water
2 x 106 x 80 cm





loose concrete, Room 3

Untitled, 2010

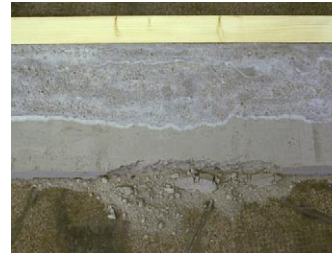
2 parts:
16 8x10" contact sheets
94,5 x 76,5 cm
wooden frame, white washed
111,5 x 91 cm
plaster cast
13 x 94,5 x 76,5 cm

loose concrete, Room 4

Untitled (Gegenstueck), 2010
concrete

2 parts:
overall dimensions
210 x 63 x 50 cm





Untitled (Base Line), 2009

Wood, Cement, Sand, Water

Protocol for insitu-installation

http://www.projectesd.com/index.php/exhibitions/detailbig/reception_pieter_vermeersch_hosts
<http://vleeshal.nl/en/tentoonstellingen/psychosculptures>



Art Forum Berlin 2009
overall dimensions here: 8 x 430 x ~ 35 cm



PROJECTSD, Barcelona, 2009, overall dimensions here: 5 x 200 x ~ 25 cm



Vleeshal, Middelburg, 2010, overall dimensions here: 8 x 400 x ~ 35 cm



Opening Exhibition BAWAG Contemporary, 2008 Wien

<http://www.bawag-contemporary.at/index.php?id=47&events=8>





Untitled (Kupferstich, 1631), 2008
4mm copper-wire, nailed, ~ 3 x 4 m





Stack, Heap, 2008

Stack
19 Aluminumboards, each 49 x 66 cm
lumber

Heap
variable amount of Aluminumboards, each 49 x 66 cm

temporary gallery cologne, 2009

http://www.temporary-gallery-cologne.de/amer_abbas/diashow_1.html







Untitled (rueRamponeau), 2008

Lambdaprint

25 x 21cm

35 x 31 Aluminiumframe

http://www.galeriewolff.com/site/exhibitions_past_detail.php?uid=42

http://www.frieze.com/shows/review/christoph_weber/

<http://bawag-contemporary.at/>



Untitled (Ramponeau), 2008

papier-maché from historic paper

37 papier-maché cobble-stones

variable size

12 x 13 x 15 cm each cobble-stone

exhibition view : solo show, galerie Jocelyn Wolff, Paris, 2008

http://www.galeriewolff.com/site/exhibitions_past_detail.php?uid=42

http://www.frieze.com/shows/review/christoph_weber/

also shown at:

<http://www.bawag-contemporary.at/index.php?id=47&events=8>

<http://www.fondomole.it/programma.pdf>











Untitled, 2008
books, cardboard box
box: 38 x 51 x 24 cm

exhibition view: solo show, galerie Jocelyn Wolff, 2008

http://www.galeriewolff.com/site/exhibitions_past_detail.php?uid=42
http://www.frieze.com/shows/review/christoph_weber/





Trauma, 2008
various media
7 doors installation
variable dimension

exhibition view: solo show, galerie Jocelyn Wolff, 2008

http://www.galeriewolff.com/site/exhibitions_past_detail.php?uid=42

http://www.frieze.com/shows/review/christoph_weber/



















The First Minutes of October, 2007

Steel

W/D/H 399 x 0,6 x 290 cm

Installation view:

silent disbelief, Solo Show

Neue Galerie Graz, Studio

http://www.museum-joanneum.at/de/neue_galerie/ausstellungen_6/studio_reihe/christoph_weber

also shown at:

Notorious, 2008/2009 <http://www.fracidf-leplateau.com/>

Lille3000, EuropeXXL, 2009 <http://lille3000.eu/>

Antirepresentationalism, part I, 2009 <http://kow-berlin.com/>

Publication: The First Minutes of October

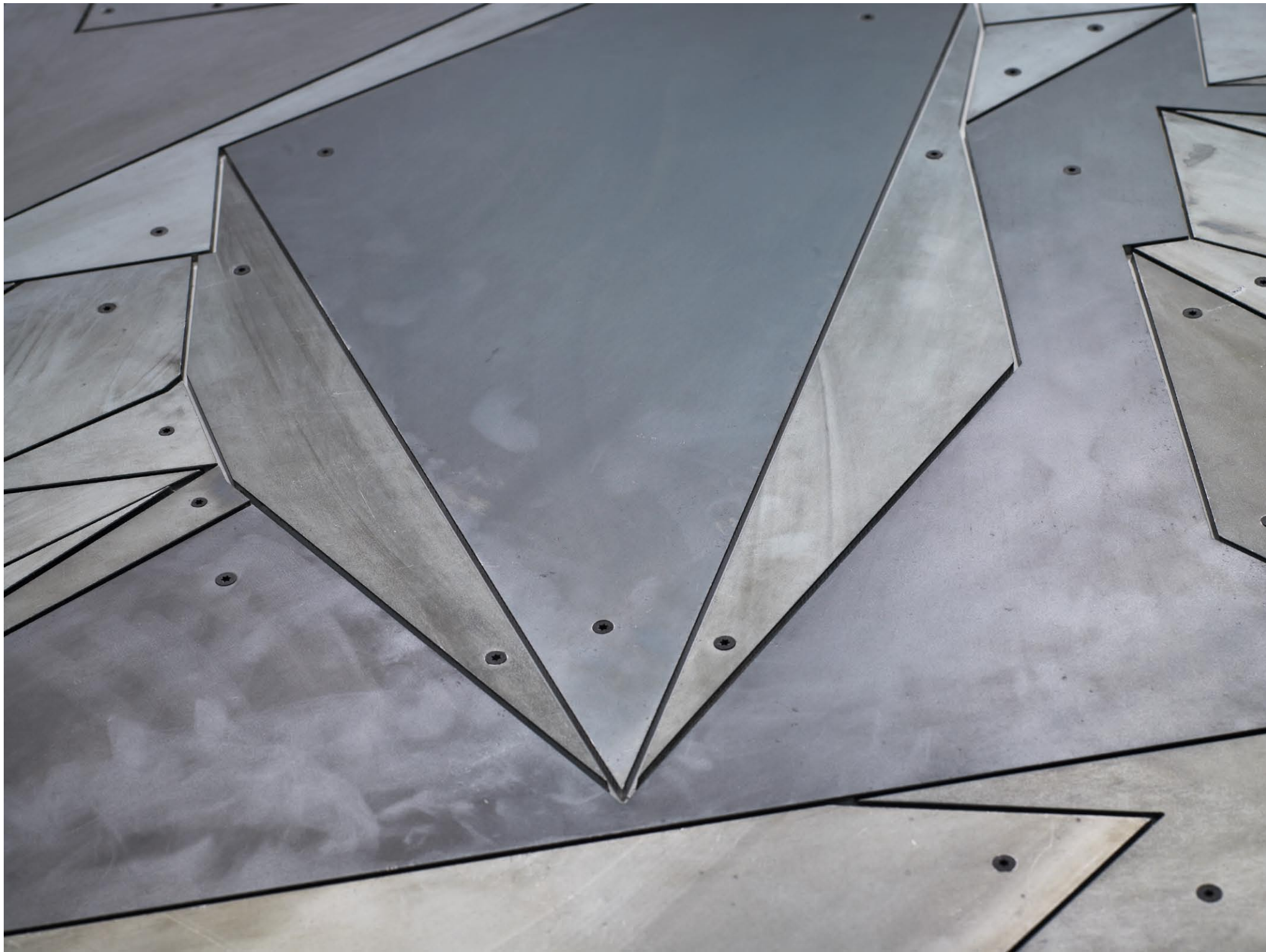
Verlag für Moderne Kunst Nürnberg, 2009

<http://vmfk.de/>

ISBN 978-3-941185-41-8











Telefunken und Tesla, 2007

2 reel-to-reel Tape Machines from the late 50ies

ri: Tesla Röhren Tonband, made in CSSR

le: Telefunken Magnetophon, made in WestGermany

BASF and ORWO tapes

30 min. dialogue

overall Dim. W/D/H approx: 150 x 150 x 30 cm

Installation view:

silent disbelief, Solo Show

Neue Galerie Graz, Studio

http://www.museum-joanneum.at/de/neue_galerie/ausstellungen_6/studio_reihe/christoph_weber

further shown at:

<http://www.georgkargl.com/de/fine-arts/ausstellung/scene-missing>





Objets Externes, 2007

Wax, Pigments

overall dim w/d/h approx. 200 x 300 x 35 cm

installation view: Espace de l'Art Concret, Mouans-Sartoux, France

<http://www.espacedelartconcret.fr/index.php?page=on-fait-le-mur>

further shown at:

Fieldgate Gallery, London, 2008 <http://www.fieldgategallery.com/base.html>

Vleeshal, Middelburg, 2010 <http://vleeshal.nl/en/tentoonstellingen/psychosculptures>





Untitled (Chunks), 2004

Sewacryl laminate,
dimensions w/d/h 85 x 13 x 70 cm each

exhibition view: Kopf oder Zahl, Kunstraum NOE, Vienna, 2007

<http://www.kunstraum.net/ausstellungen/archiv/kopf-oder-zahl-arbeitstitel>

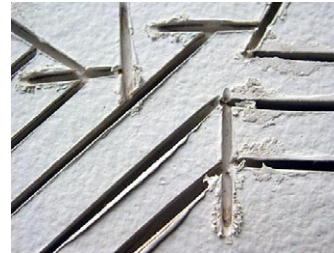
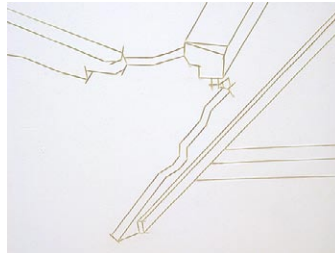
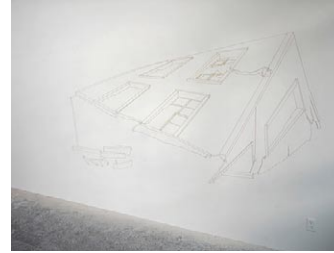
also shown at:

Stagnation, 2004 http://www.galeriewolff.com/site/exhibitions_past_detail.php?uid=5

Antirepresentationalism, part II, Berlin, 2009

http://www.kow-berlin.info/exhibitions/antirepresentationalism_2_trouble_with_realism
in:system, Schloss Ulmerfeld, Austria, 2010

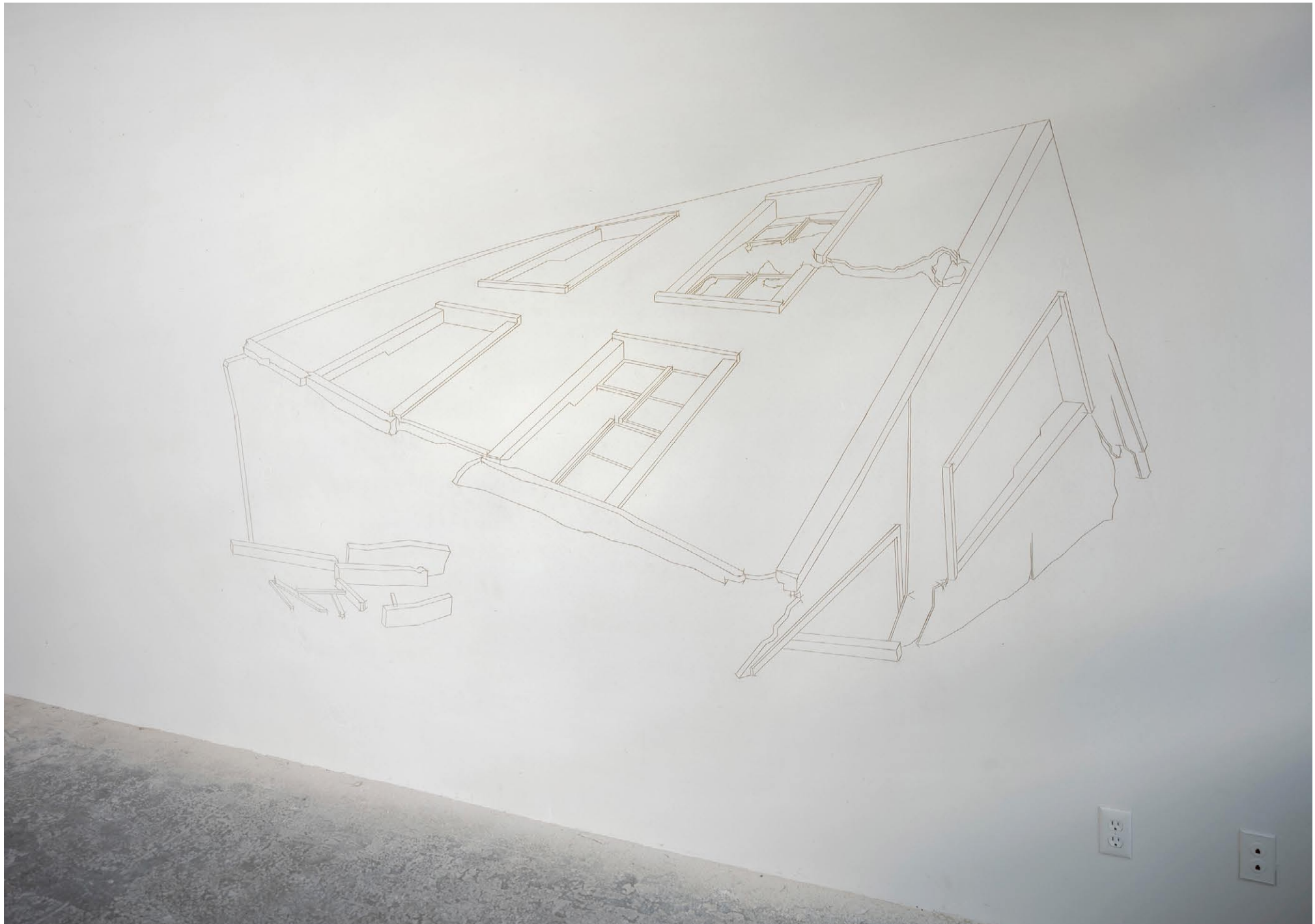


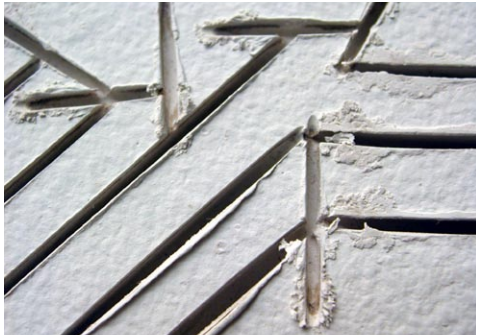
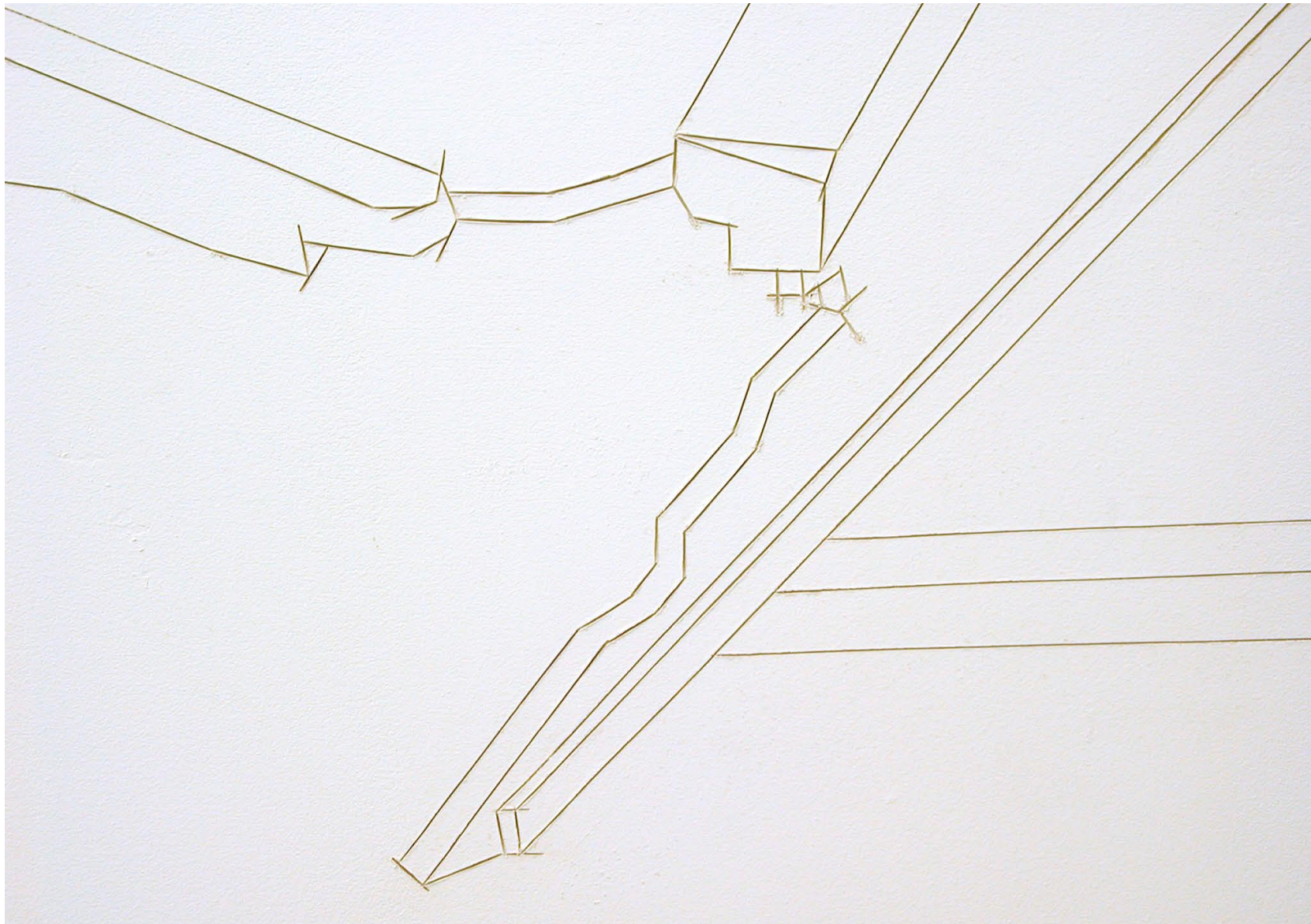


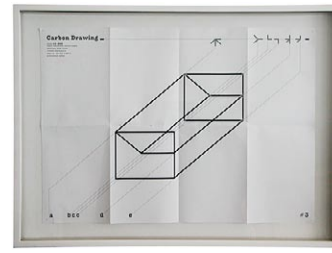
Damage #1, 2003

In-Wall-Drawing (Schlitzung), 296 x 160 cm

exhibition view: International Studio and Curatorial Program, New York City







Stagnation, 2004
Soloshow
Galerie Jocelyn Wolff, Paris

Damage #2, 2004
In-Wall-Drawing (Schlitzung), approx. 250 x 350 cm

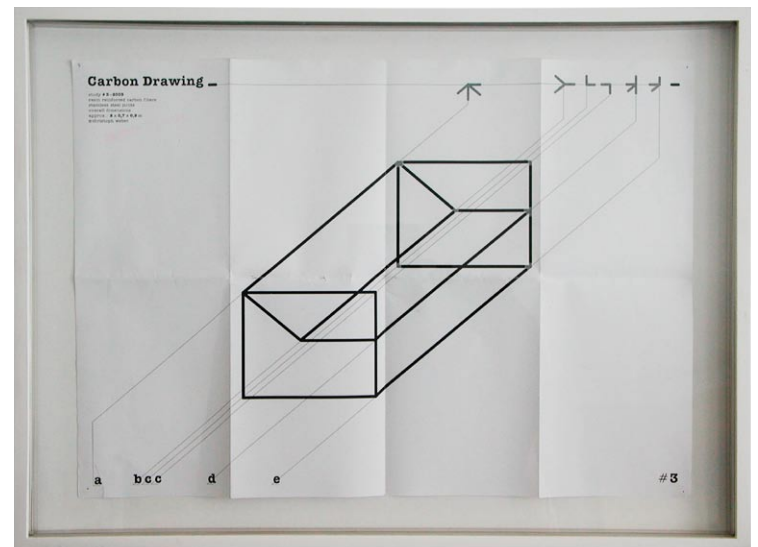
Untitled (Chunks), 2004
Sewacryl laminate,
dimensions w/d/h 85 x 13 x 70 cm each

Carbon Drawing #3, 2003
carbon fiber poles, joints in stainless steel
dimensions w/d/h 200 x 90 x 70 cm













Carbon Drawing Studies, 2003/2004

diasec 35 x 42 cm















to the redundant population

cooperation with Clemens von Wedemeyer

Carbon Drawing #4, 2004

carbon fibre poles, joints in stainless steel

3x3x3 m

dedication „to the redundant population“

after Ricardo/Marx/Agnoli in the 5 languages

of the first translation of „The Manifesto of the Communist Party“

290 x 80 cm

109 signs

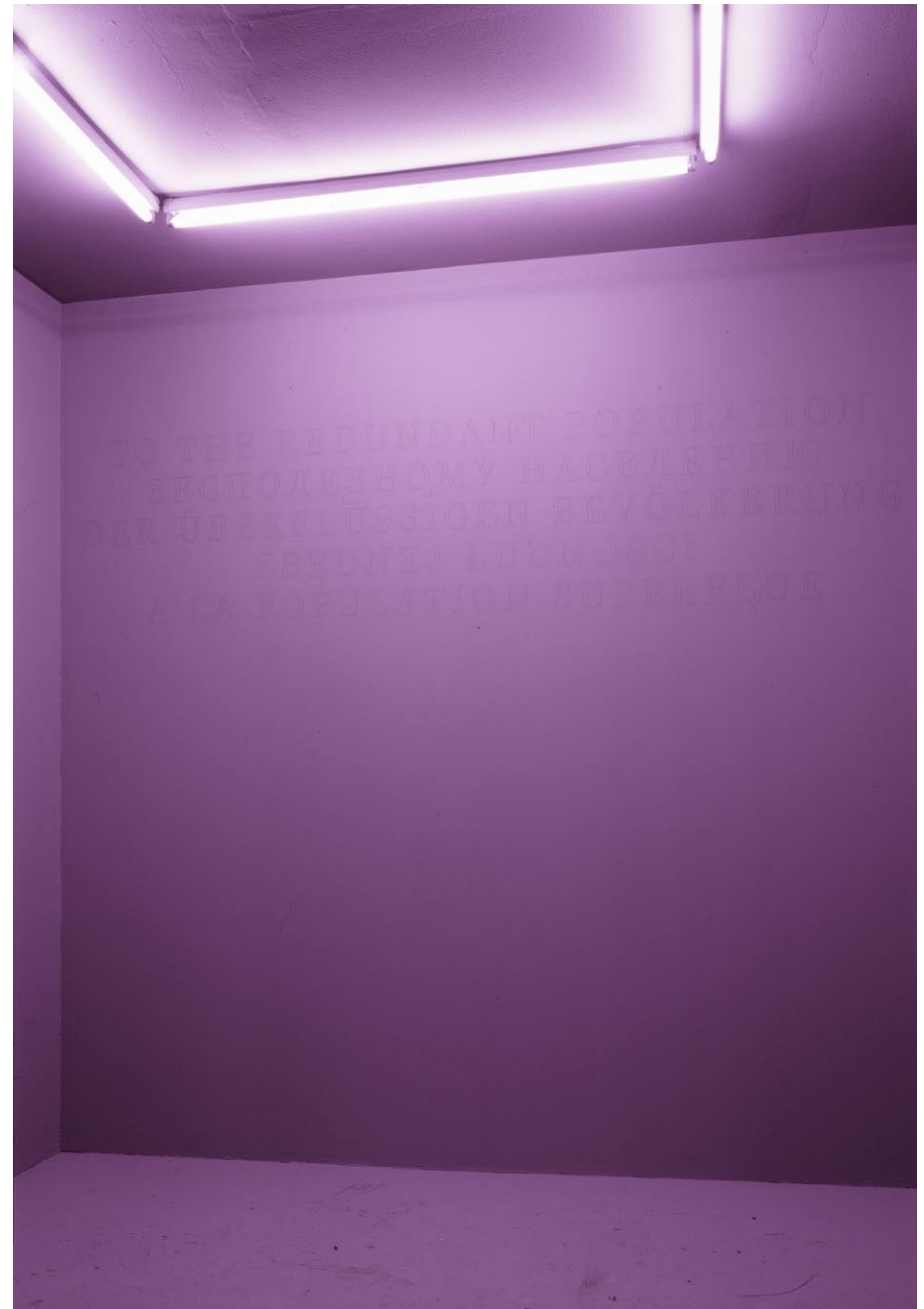
3 fluorescent tubes ‚Fluora‘

150 cm

within the exhibition

Eines Abends spät in der Zukunft

Kubus, Leipzig



to the redundant population

christoph weber und clemens von wedemeyer

Carbon Drawing

4 - 2004

Kohlefaserarbeiten
Eisendrahtgelenke

3 x 3 x 3 m

Widmung »To the redundant population«
nach Richard Marx/Adzoli

in 5 Sprachen der ersten Übersetzungen des
»Manifest der kommunistischen Partei«

250 x 80 cm

109 Zeichen

3 Heutöhren Fluora
150 cm



Anlässlich der Reihe **Kinos Abends spät in der Zukunft** — Kubus Leipzig 2004

TO THE REDUNDANT POPULATION
БЕСПОЛЕЗНОМУ НАСЕЛЕНИЮ
DER ÜBERFLÜSSIGEN BEVÖLKERUNG
ZBĘDNEJ LUDNOŚCI
A LA POPULATION SUPERFLUE



Sehnsucht, Reichtum, Glück

Bookobject, 2001

2450 pages, lightweightpaper (Biblepaper), Hardcover

20 x 24 x 10 cm

exhibition view:

Nine Points of the Law,

Neue Gesellschaft für Bildende Kunst, Berlin

[http://ngbk.de/typo3/index.php?id=331&tx_jppageteaser_pi1\[backId\]=180](http://ngbk.de/typo3/index.php?id=331&tx_jppageteaser_pi1[backId]=180)

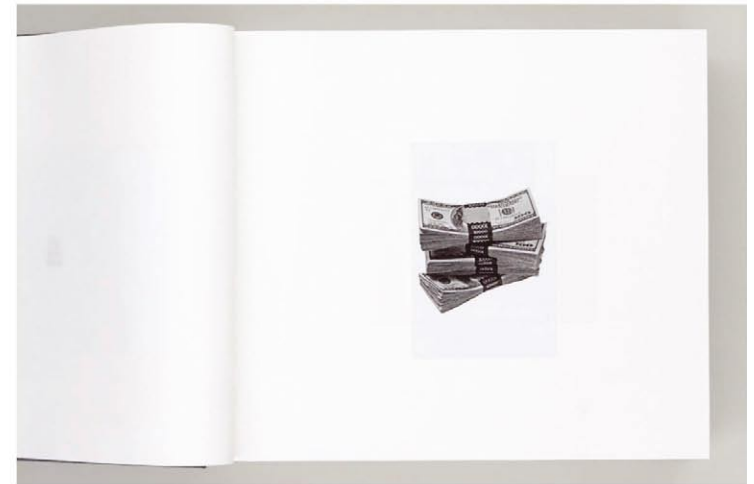
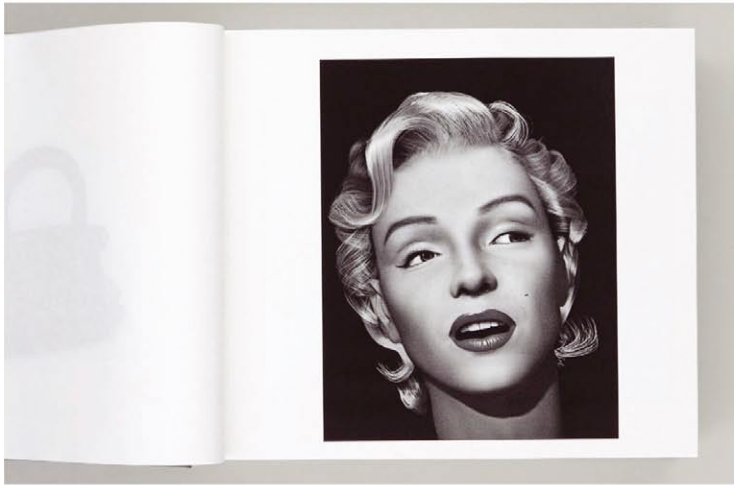
also shown at:

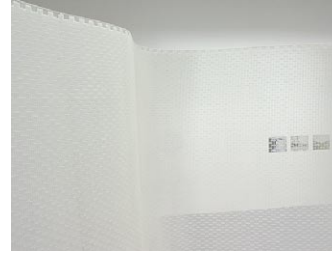
Antirepresentationalism, part III, Berlin, 2010

http://www.kow-berlin.info/exhibitions/antirepresentationalism_3









Untitled, 2002

Installation

Epoxy, Fries: Videostills transfered with foil

dimension sculpture: 3,5 x 2,1 x 0,8 m

images: 26 x 32,5 cm

exhibition view: Diplomausstellung, HGB Leipzig, Germany



